

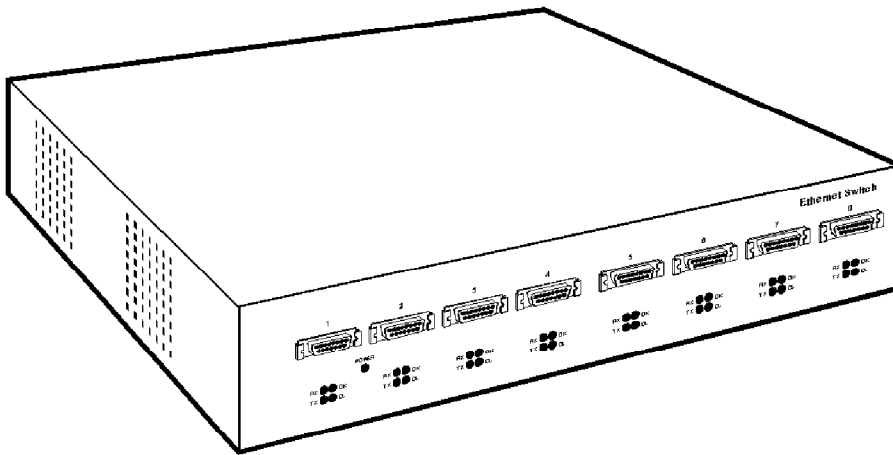


# BLACK BOX<sup>®</sup>

© Copyright 1994. All rights reserved.  
Black Box Corporation.

The Source for Connectivity<sup>®</sup>

## Ethernet Switch FC



*For real-time multi-segment data transfers, choose the fastest Ethernet switch available.*

*The Ethernet Switch FC can increase your Ethernet LAN performance up to 800%!*

### Key Features

- ▶ Operates with a variety of cables—ThinNet, 10BASE-T, and fiberoptic cable.
- ▶ 80-Mbps connectivity.
- ▶ Protocol-independent.
- ▶ Learns network device addresses automatically.
- ▶ Filtering and forwarding rates at wire speed.
- ▶ Full 802.1d MAC-layer bridging and SNMP compatibility.
- ▶ Upgradeable firmware.
- ▶ Four models to choose from.

### Overview

Featuring the Intel<sup>®</sup> i960<sup>®</sup> RISC processor and ultra-efficient bridging algorithms, this Switch gives you the best performance in local Ethernet bridging.

A true MAC-layer Ethernet bridge, the unit gives you all the advantages you'd expect from an Ethernet switching hub. It transfers data at lightning speeds—and lets you rest easy about data integrity.

The Switch features an aggregate filtering rate of 119,040 packets per seconds and an aggregate forwarding rate of 59,520 packets per second. Best of all, each port on the unit can forward packets at full Ethernet wire speed.

You set the filtering. Permanently link a destination MAC address to a

port—or selectively filter certain source MAC addresses. With full SNMP support, management is trouble-free, too. The Switch gives you advanced filtering setup and status reporting.

The unit supports IEEE 802.1d Spanning Tree algorithm, Ethernet version 2, and IEEE 802.3, so compatibility is never a problem.

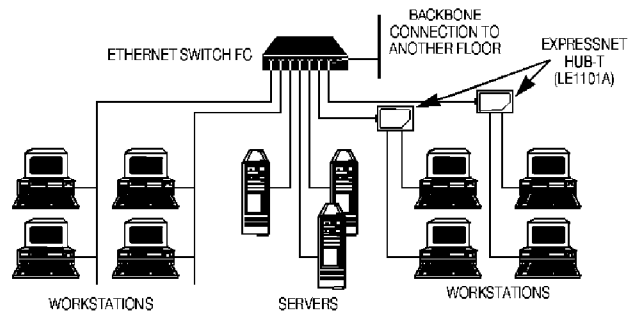
To increase throughput from one switch to another, connect two Switches together with a 20-Mbps link.

Setup takes just minutes. Thanks to an autolearning feature, there's nothing to configure. Set the Switch on a table or desk or keep it out of the way by installing it in your wiring closet with a standard 19" rack (not included).

### Typical Applications

*Section your Ethernet LAN into eight segments and increase network capacity by up to 800%. With the Ethernet Switch FC, each segment runs at 10 Mbps, resulting in a network aggregate throughput of 80 Mbps (when devices communicate with devices on their own segment), or 40 Mbps (when devices communicate with devices on other segments).*

By dividing your Ethernet network into segments, the Ethernet Switch FC reduces timeouts, increases response time to workstations, and allows multiple simultaneous transmissions.



## Technically Speaking

- ◆ The Switch automatically updates your address table, so you can move or remove nodes on demand.
- ◆ There are four different Switches to choose from—FOIRL, AUI, BNC, and BT.
- ◆ SNMP is a protocol created to provide a common language for multivendor internetworking communications. The Switch supports a complete SNMP compliant agent—not simply a proxy agent.
- ◆ With Spanning Tree you can make a critical backbone connection between two buildings. Set up two parallel backbone segments between an Ethernet Switch FC in one building and another Switch in another building.
- ◆ With Spanning Tree enabled, the Switch will automatically put one of the backbones in a standby mode while using the other to carry active traffic. If the active segment should experience a failure, such as a cable cut, the Switch will detect this, shut off the defective connection, and enable the standby connection.

Specifications	
Ethernet Switch FC	
<b>Speed</b> — 10 Mbps	<b>Connectors</b> — LB9100A: 16 ST* female (1 RX, 1 TX per segment); LB9102A: 8 AUI female; LB9105A: 16 BNC; LB9110A: 8 RJ-45 female
<b>Filtering Rate</b> — Port: 14,880 pps; Aggregate: 199,040 pps	<b>Power</b> — 95-135 VAC, 47-440 Hz at 3 A
<b>Forwarding Rate</b> — Port: 14,880 pps; Aggregate: 59,520 pps	<b>Size</b> — 3.5"H x 17.2"W x 19.3"D (8.9 x 43.7 x 49 cm)
<b>Protocol</b> — MAC-layer operation, SNMP support for network management	<b>Weight</b> — 25 lb. (11.3 kg)

## The Complete Package

What you get when you order Ethernet Switch FC.

- ◆ Ethernet Switch FC
- ◆ User's Manual

## Additional equipment you may need

- ◆ Transceiver PVC Cable
- ◆ Office Transceiver Cable
- ◆ ThinNet Coaxial Cable
- ◆ 10BASE-T Patch Cable
- ◆ Fiber Optic Transceiver-ST
- ◆ Fiber Optic Transceiver-SMA
- ◆ ExpressNet Hub-T
- ◆ 19" Rack

**For these and other components...**  
Call our expert Technical Support Staff for all your LAN/WAN needs. They'll help you find the best equipment for your application.

## Ordering Information

This information will help you place your order quickly.

PRODUCT NAME	PRODUCT CODE
Ethernet Switch FC	
FOIRL.....	LB9100A
AUI.....	LB9102A
BNC.....	LB9105A
BT.....	LB9110A