

ServSwitch 4Site

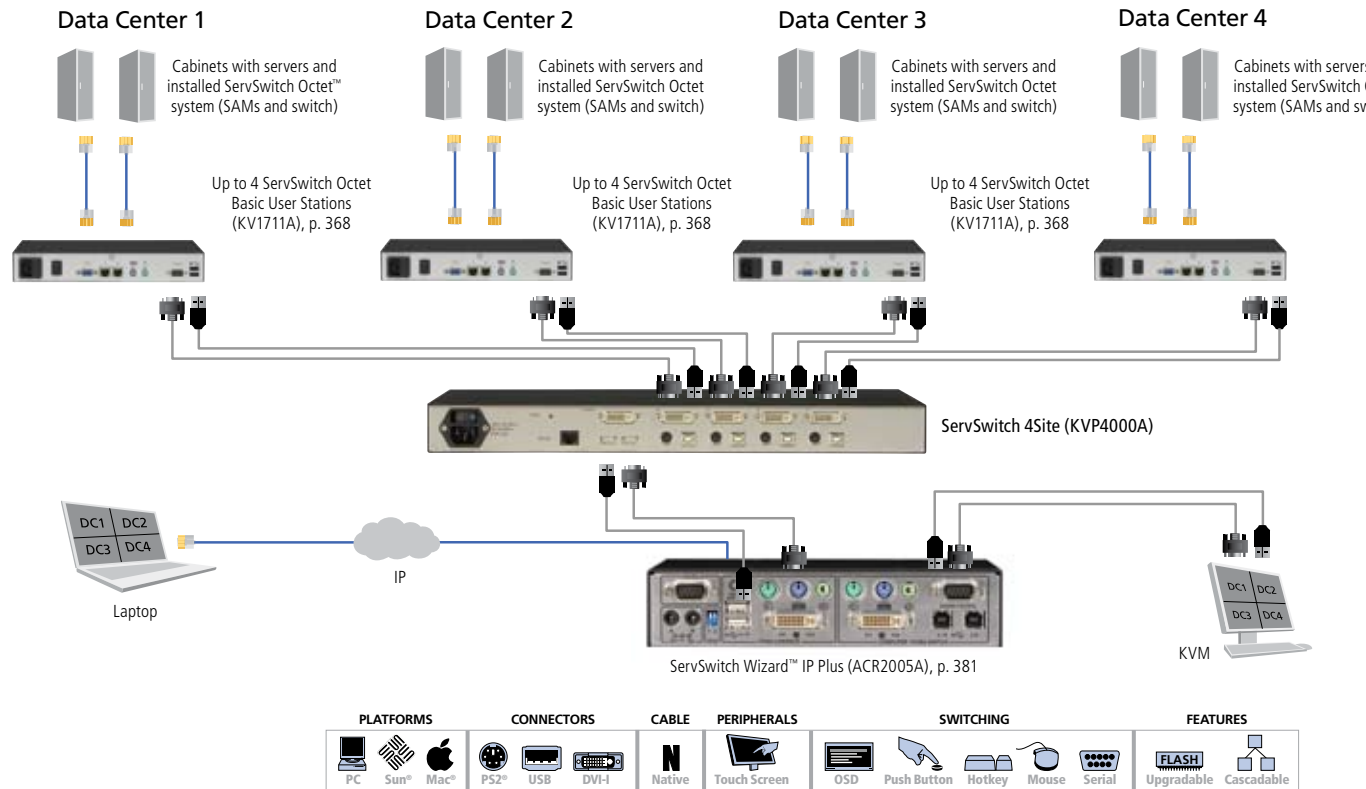
All-in-one 4-port KVM switching and image processing.



FEATURES

- » Access up to 4 servers from one KVM console.
- » View in single-video format, all four video screens in a quad-tiled format, or picture-in-picture video.
- » Compatible with all combinations of DVI and VGA (graphics cards and monitors).
- » Supports resolutions up to 1920 x 1200 pixels at 60 Hz.
- » Works with KVM over IP access points.

Typical large-scale switching system configuration.



OVERVIEW

The [ServSwitch 4Site](#) provides control and real-time monitoring for up to four PCs from one console with keyboard, video, and mouse. The [ServSwitch 4Site](#) is a classic 4-port keyboard-video-mouse (KVM) switch—plus, it features simultaneous monitoring of four different computer video sources on a single screen. Control up to four remote PCs connected to the [ServSwitch 4Site](#) from a single local KVM console.

The [ServSwitch 4Site](#) combines KVM switching and image processing. Users can access up to 4 servers, either by connecting to the servers and seeing single video on their monitor, or by seeing all 4 servers on their monitor in a quad-tiled format, at the same time, in real time.

The [ServSwitch 4Site](#) supports analog VGA as well as digital DVI. All combinations of DVI and VGA (graphic cards and monitors) are supported, allowing equipment to be mixed. Resolutions up to 1920 x 1200 pixels @ 60 Hz are supported.

Typical applications include using it with a KVM over IP access

point (for example, the [ServSwitch Wizard IP Plus \[ACR2005A\]](#)) to operate remotely. All devices can be connected to the [ServSwitch™](#) from any location using Web client via LAN/Internet.

In a large-scale switching system configuration, video signals from any 4 computers out of a larger pool of servers can be displayed and administered on the local console (monitor, keyboard, and mouse).

Use either buttons on front of the unit, keyboard commands (hotkeys), or mouse functions (hotmouse) for switching channels or selecting the display mode (Fullscreen/Quad/PiP).

In Fullscreen Mode, one of the four computers' video sources is displayed in full screen size and maximum resolution.

In Quad Mode, the screen is split into four fields of equal size, each displaying the entire screen contents of four different video sources.

In Picture-in-Picture mode, the full screen display of one of the four video sources is accompanied by one to three small images (thumbnails) of the other video sources on the right-hand margin of the screen, allowing simultaneous monitoring.

TECH SPECS

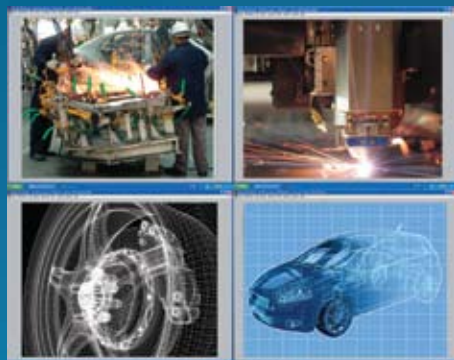
Resolution — Up to 1920 x 1200 pixels
Maximum Distance — 16.7 ft. (5.1 m) to console (keyboard-video-mouse), 16.7 ft. (5.1 m) to CPU
User Controls — (4) Port-switching buttons, (1) Quad-mode button, (1) PiP mode button, (1) Reset button, (1) Power switch
Connectors — Computer ports: (4) DVI-I (analog and digital), (4) PS/2, (4) USB;
 Console ports: (1) DVI-I, (2) USB for keyboard and mouse;
 RS-232: (1) RJ-45;
 Power: (1) IEC-320
Indicators — (4) Port LEDs, (1) Quad mode, (1) PiP mode
Power — 100–240 VAC, 50–60 Hz, 40 watts maximum
Size — 1.75" H x 17.1" W x 9.2" D (4.4 x 43.4 x 23.4 cm)
Weight — 6.4 lb. (2.9 kg)

What's included

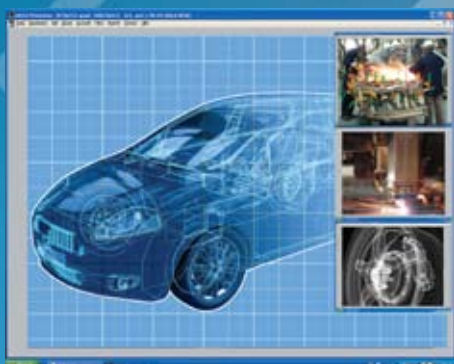
- ◆ (1) ServSwitch 4Site
- ◆ (1) IEC-320 power cord
- ◆ (1) 6.7-foot (2-m) DB9 female to RJ-45 male serial flash control cable
- ◆ (1) CD-ROM containing a user's manual

You need to purchase additional cables to link the switch to the servers/computers. See the ordering block.

Item	Code
ServSwitch 4Site	KVP4000A
Remember to order cables...	
ServSwitch DT Series CPU Cable	
6-ft. (1.8-m)	EHN900024U-0006
10-ft. (3-m)	EHN900024U-0010
15-ft. (4.5-m)	EHN900024U-0015



In Quad Mode, you can view the entire screen from four different video sources.



In Picture-in-Picture Mode, you can view the full screen display on one video source along with smaller images from the three other video sources.

All device parameters may be set and stored with an On Screen Display (OSD). There are two ways to display the OSD main menu: use Keyboard Command O or simultaneously press the Quad and PiP buttons on front of the ServSwitch 4Site for longer than one second.

OSD menu options include System Hotkey, Mode, Configuration, Console, Video, Computer, and Help.

The System option lets you select either multiple hotkey or double-click hotkey, timeout for channel selection, OSD window position, English or German language, set security level, test pattern, and inactivate unused channels. The Mode option allows you to choose size, zoom, position, and PiP display mode.

The Configuration option saves the current parameters, restores the last saved configuration, or resets the unit to factory defaults.

The Console option selects output resolution, keyboard layout (English or German), assigns mouse and keyboard to video, and displays the monitor's EDID data.

The Video option shows computer video input formats, sets brightness, contrast, horizontal position, vertical position, screen width, phase, and fits input format to the screen display.

The Computer option displays keyboard type (PC1, PC2, PC3, or USB), mouse type (PS/2®, PS/2 wheel, or USB), and resets the PS/2 mouse and keyboard.

The Help option lists keyboard commands, firmware revision level, and contact information.

LED indicators on the front panel show the unit's status.

An RS-232 serial port on the rear panel is used to load firmware updates to the unit.

Why Buy From Black Box? Exceptional Value. Exceptional Tech Support. Period.

Recognize any of these situations?

- You wait more than 30 minutes to get through to a vendor's tech support.
- The so-called "tech" can't help you or gives you the wrong answer.
- You don't have a purchase order number and the tech refuses to help you.
- It's 9 p.m. and you need help, but your vendor's tech support line is closed.

According to a survey by *Data Communications* magazine, 90% of network managers surveyed say that getting the technical support they need is extremely important when choosing a vendor. But even though network managers pay anywhere from 10 to 20% of their overall purchase price for a basic service and support contract, the technical support and service they receive falls far short of their expectations—and certainly isn't worth what they paid.

At Black Box, we guarantee the best value and the best support. You can even consult our Technical Support Experts before you buy if you need help selecting just the right component for your application.

Don't waste time and money—call Black Box today.