

Liebert PSI

High Performance Power Protection for Servers and Networking Equipment
750VA to 3kVA

Liebert PSI is a feature-rich UPS system with industry leading 0.9 power factor. Its high power output delivers superior performance on power factor corrected (PFC) power supply and satisfactory backup time in the high demand environment. Liebert Multilink UPS software protects servers through local USB communication or via network. Matching external battery cabinets offer UPS backup time to several hours in the extended requirements.

Features



Lowest Total Cost of Ownership

- Operates at a high 0.9 power factor that makes it ideal for today's modern IT equipment, providing 29% more power than typical UPS
- Reduced installation time and costs - shipped with batteries connected and charged
- Two-year warranty - no-hassle replacement
- Supports Liebert Multilink shutdown software



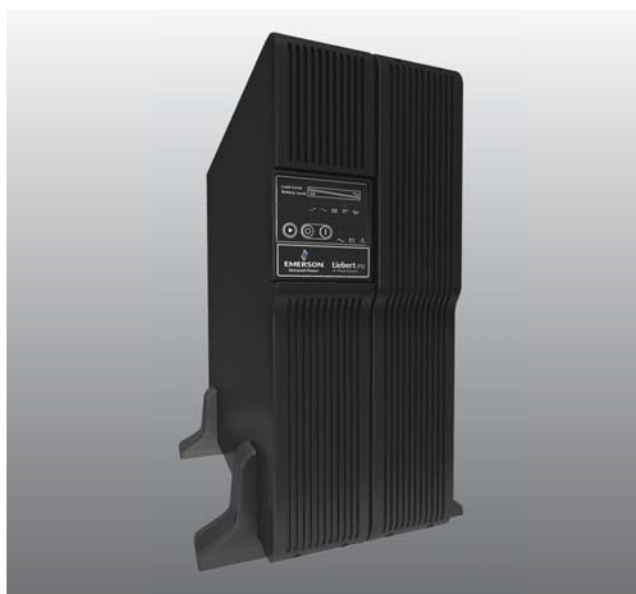
Higher Availability

- Greater than three minutes of internal battery backup time at 100% load provides ample time for an orderly shutdown of equipment.
- Buck/boost automatic voltage regulation technology protects against utility voltage fluctuation by raising and lowering utility power to the level needed by connected equipment



Flexibility

- Eight to nine battery-backed outlets
- User replaceable and hot-swappable batteries
- Rack/Tower Convertible with rotatable display panel, 2U in height on all models
- Multiple remote communications and shutdown options provide remote monitoring and power management - EB/ SNMP, USB, contact closure and remote power off



The Liebert PSI Is Ideally Suited For:



- Network Computers
- Servers
- Network Closets
- Computer Rooms
- Large Network Peripherals
- Network Storage Devices

Bringing our Enterprise Level IT Expertise to your SMB

Emerson Network Power offers a full range of power protection solutions suitable for every requirement or scenario. From desktop computing, network equipment, computer rooms to large scale data centers, we make sure you get the same level of protection the Fortune 500 companies enjoy with Emerson. It is our way of Bringing Enterprise Level IT expertise to your SMB.



Desktop Computing

- Liebert PSP
- Liebert PSA



Network / Computer Room

- Liebert PSI
- Liebert GXT
- Liebert ITA



Data Center

- Liebert ITA
- Liebert NX
- Liebert Hipulse



Liebert Multilink software provides you:

- Warnings to computer users of power loss, and graceful operating system shutdown when needed
- Full functionality and automatic shutdown protection right out of box - virtually no configuration is required
- Intergration with Liebert Web card and network shutdown capability



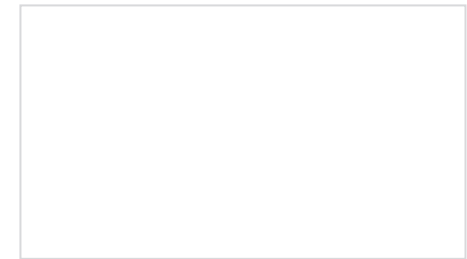
Optional Liebert IntelliSlot Web Card provides SNMP and web-based management

Liebert PSI Specifications

Model Number	PS750RT3-230	PS1000RT3-230	PS1500RT3-230	PS2200RT3-230	PS3000RT3-230
Input Connection	IEC-320 C14			IEC-320 C20	
Output Connection	IEC-320 C13 x 8			IEC-320 C13 x 8 + C19 x 1	
Communication Interface	REPO, USB, Contact Closure, Intellislot				
Dimensions: (mm)	88(2U) x 440 x 412			88 (2U) x 440 x 657	
Shipping Dimensions: (mm)	228 x 560 x 595			228 x 560 x 776	
Net Weight: (kg)	15.0	19.4	20.9	33.8	37.2
Shipping Weight: kg	18.2	22.6	24.1	38.3	41.5
Form Factor	Rack/Tower Convertible, Tower Stand included				
Input Power Cable	Nil			"Shucko" CEE 7/7 and BS1363 to IEC-320-C19	
Number of Output Cable	2			3	
Software	Liebert Multilink, support for Windows NT/2000/XP/Vista, Linux				
Operation	PS750RT3-230	PS1000RT3-230	PS1500RT3-230	PS2200RT3-230	PS3000RT3-230
Capacity	750VA/675W	1000VA/900W	1500VA/1350W	2200VA/1980W	3000VA/2700W
Normal Input Voltage	220/230/240VAC ± 10% (configurable)				
Input Voltage Window	165-300VAC				
Input Frequency Window	45-65Hz ± 0.5Hz				
Input Protection Type	Resettable Circuit Breaker				
Default frequency	50Hz				
Boost Mode Voltage	Input Voltage x 117%				
Buck Mode Voltage	Input Voltage / 115%				
Transfer Time (AC to DC)	4-6 ms typical				
Efficiency	>96% on Line Mode				
Surge Protection	220 J				
Output (battery mode)	Voltage	220/230/240VAC (configurable)			
	Voltage Regulation	± 5%			
	Wave Form	Pure Sine Wave			
Battery type	Sealed, non-spillage, maintenance-free, lead acid with 5 year typical lifetime				
Quantity x Voltage x Ah	2 x 12 x 7.2	3 x 12 x 7.2	3 x 12 x 9	6 x 12 x 7.2	6 x 12 x 9
Backup Time at full load pf 0.7	>6 minutes	>6 minutes	>5 minutes	>6 minutes	>5 minutes
Backup Time at full load pf 0.9	>4 minutes	>4 minutes	>3 minutes	>3 minutes	>3 minutes
Typical Recharge Time	5 hours to 90% of rated capacity, after full discharge into resistive load				
Hot Swappable Battery	Yes				
Electrical Fast Transient	IEC/EN/AS62040-2 2nd Ed Class A				
Agency Approvals	Safety	IEC/EN/AS 62040-1-1			
	Surge	IEC/EN/AS 61000-4-2			
	ESD	IEC/EN/AS 61000-4-3			
	Susceptibility	IEC/EN/AS 61000-4-4			
	Emission	IEC/EN/AS 61000-4-6			
	Conducted Immunity	IEC/EN/AS 61000-3-2			
	Harmonics	IEC/EN/AS 61000-4-6			
	Transportation	ISTA Procedure 1A Certification			
	WEEE and ROHS	Yes			
Operation Condition	3,000 meter max. elevation, 0-90% humidity non-condensing 0-40 deg. C				
Noise Level	<45dBA on Line Mode				
Accessories	PS750RT3-230	PS1000RT3-230	PS1500RT3-230	PS2200RT3-230	PS3000RT3-230
SNMP/WEB Management Card	IS-WEBRT3				
Maintenance Bypass Switch	MP2-210K			MP2-220L	

Emerson Network Power Asia Pacific

- Australia**
T: 1800-065345 F: 61-2-97438737
- China**
T: 86-755-86010808 F: 86-755-86010909
- Hong Kong**
T: 852-25722201 F: 852-28310114
- India**
T: 91-22-25807000 / 2388 F: 91-22-25828358
- Indonesia**
T: 62-21-2513003 F: 62-21-2510622
- Japan**
T: 81-3-54038594 F: 81-3-54032924
- Korea**
T: 82-2-34831502 F: 82-2-5927883
- Malaysia**
T: 603-7884 5000 F: 603-7884 5188
- New Zealand**
T: 64-3-3392060 F: 64-3-3392063
- Philippines**
T: 63-2-620 3600 F: 63-2-6203693
- Singapore**
T: 65-64672211 F: 65-64670130
- Taiwan**
T: 886-2-2528 3535 F: 886-2-2528 3100
- Thailand**
T: 66-2-6178260 F: 66-2-6178277 / 278
- Vietnam**
T: 84-4-762 8908 F: 84-4-762 8909



Emerson Network Power.
The global leader in enabling business-critical continuity.

- AC Power Systems
- Connectivity
- DC Power Systems
- Embedded Power
- Integrated Cabinet Solutions
- Outside Plant
- Power Switching and Control
- Precision Cooling
- Site Monitoring
- Surge Protection
- Embedded Computing
- Services

www.EmersonNetworkPower-Partner.com

Emerson Network Power and the Emerson Network Power logo are trademarks and service marks of Emerson Electric Co. ©2009 Emerson Electric Co.

AP09DPG-PSIV1-B